



Retail Tablet 3G

UID0357

- | | | | | |
|---|---|---|----|-----|
| S | M | L | XL | XXL |
|---|---|---|----|-----|

FIRST RETAIL TABLET OF THIS SIZE

The i DISPLAY Retail Tablet XXL is an Android based, interactive digital display which is specifically built for retail and is the only retail tablet at this unique size. The i Display Retail Tablet is a robust yet slimline unit that features a high quality 21.5" touch screen integrated within tempered glass to ensure durability and effectiveness. The embedded Wi-Fi and 3G enable remote automatic connection to content management system (CMS). i DISPLAY Retail Tablet XXL software and hardware have been designed for commercial and retail use and include important features such as content auto-play, auto-copy, auto-detect and password protection functionalities. A VESA mounting system on the back enables various mounting solutions for the retail environment. Setting buttons and sockets are placed at the back of the device to prevent customers from modifying the preferred settings. The Retail tablet can connect to external hardware such as a coupon printer, barcode scanner and can run a multitude of Android applications to reinforce marketing messages and promotions within the retail space. The i DISPLAY Retail Tablet XXL offers the ability to work in either landscape or portrait mode, comes with a variety of fixtures, and is the ideal digital point of sale display that is sure to grab customers' attention and gives them the ability to view and interact with your content on the largest retail tablet available.



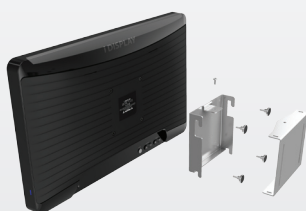
High Quality Touch Screen



Built for Retail

i DISPLAY+

Web Based CMS



Variety of Fixtures



Tempered Glass



3G and Wi-Fi Enabled

Panel Information

Screen Size	21.5"
Touch Screen Type	Resistive touch screen
Active Area	476.64 (H) x 268.11 (V) mm
Pixel Pitch	0.248 (H) x 0.248 (V) mm
Max Resolution	1024 x 600
Brightness	250 cd/m2
Contrast Ratio	1000
Horizontal Viewing Angle	3 o'clock = 89° 9 o'clock = 89°
Vertical Viewing Angle	12 o'clock = 85° 6 o'clock = 85°
Aspect Ratio	16:9

Playback Functions

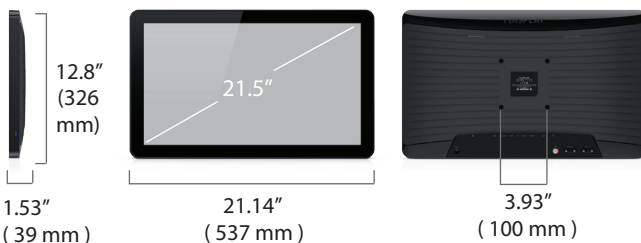
Functionality	Supports auto play of movie/ flash swf file/ APK/ JPEG Supports content management system Supports up to 20 extra push buttons and motion sensor
Video Formats	MKV/ MPEG4/ AVI/ FLV/ MOV/RMVB
Image Formats	JPEG, BMP, PNG

Audio Outputs

Mono/ Stereo	Stereo
Audio Code	MP3/ APE/ FLAC/ AAC/ OGG

Recommended Video Format

Resolution	1920X1080
Video Format	XVID (.AVI)
Frame Rate	23.976 fps
Bit Rate	4000 Kbps
Audio code	MP3 120Kbps



Power

Power Input	110V/240V
Power Output	12V/4A
Power Consumption	48W
Power Source	Power Supply cable 3m

General Information

Size (W x H x D)	537 x 326 x 39 mm
Weight	4150 g
Operation Temperature	0°C to 40° C
Relative Humidity	40% - 70%
Internal Memory	4GB
Connectivity	Wi-Fi 802.11 b/g/n 3G WCDMA (CDMA 2000 optional) Bluetooth 2.1 RJ45 compatible
Color	Black / White (other colors optional)
Input Ports	USB (*2) / Micro SD / 3G SIM / HDMI / RS232/ Earphones / I2C (PB and MS) / DC in / ON/OFF switch / Volume button / Brightness button
Approvals & Certifications	ROHS, CE / FCC

Packing

Product Carton Size	686 x 107 x 401 mm
Master Carton Size	706 x 233 x 421 mm
Master Carton Weight	13 kg
Units Per Master Carton	2 pcs

Accessories

Mounting	Mounting adaptor
Other Accesories	Large counter display, Floor Display, Wall Bracket, Rotating Wall Bracket, Shelf Bracket, Rotating Shelf Bracket, Connect Box, Push Button, Motion Sensor

Specifications are subject to change without prior notice. Contact: support@i-display.com

i DISPLAY
Interactive Digital Displays